



LAKE SIDE

CABINETS & WOODWORKING

8209 199th Ave NW | Nowthen MN 55330 | 763-753-2628 | Fax 763-213-0724 | www.lakesidecabinets.com | lakesidecabinets@tbinc.net

Hardware For Your Cabinets

The right hardware is the finishing detail that that makes everything come together. At Lakeside Cabinets, we make the process simple by offering two ways to choose your hardware.

Decorative Hardware Allowance

We've designed this program to make it simple for you to choose hardware that stays within the allowances included with your cabinets. To help you stick to your budget, we've put together multiple ways to find the style you love without guesswork.

Choose How to make your Selections:

___ Builder assistance – select hardware with your builder using the display board(s) we have provided to them.

___ Online - Choose from the Decorative Hardware gallery on our website:

www.lakesidecabinets.com/decorative-hardware-program/

___ Showroom Visit – Stop by our showroom during business hours to make your selections. Our team will guide you the displays that fit within your allowance and provide you with the **Hardware Selection Form** (see page 3) to complete.

Drilling / Selection Guidelines:

- You are welcome to select up to 3 different hardware selections for your cabinets.
- One piece of hardware per door and drawer.
- Each hardware size change is a different selection. The goal is to reduce multiple drilling specifications which may slow or stop production and avoid any drilling errors.
- Locations - Our standard drilling locations on your cabinet doors will be 2" from the bottom or top of any door; Our standard drilling location on Drawers will be Centered on the front of all paneled drawers and 3" down from the top drawers in a stack.
- Selection Timeline: **4 weeks** prior to the delivery to the house or pick up of your cabinets. If we do not have your choice at least **three weeks** before that date a change order will be issued for the removal of the hardware from your project. If the hardware is selected after, there will be a \$150 expedite fee and we will provide jigs for you to drill.

In Association with



To better serve you!

Visit us at www.lakesidecabinets.com to learn more!



LAKE SIDE

CABINETS & WOODWORKING

8209 199th Ave NW | Nowthen MN 55330 | 763-753-2628 | Fax 763-213-0724 | www.lakesidecabinets.com | lakesidecabinets@tbinc.net

FAQs

Q: Are Different Finishes considered a selection?

A: No, you can choose as many different colors as you want.

Q: Do the larger pull cost more?

A: Yes, the larger they are the more they cost to manufacture.

Q: What if I choose something and it does not fit?

A: We will do our best to catch this and order a smaller size. Ultimately you are choosing what you like.

Q: What if we want to get our own hardware?

A: Not a problem. (Please note, we do not offer drilling services for hardware not purchased through Lakeside Cabinets)

Custom Hardware Program

If you'd like more options beyond our standard hardware program, we'd be happy to explore those with you during a **scheduled showroom appointment**. Your custom selections can be as unique as you would like – we're here to help bring your vision to life.

At your appointment, we'll review your drawings together and guide you through the choices to make sure you find just the right fit. To make the process as simple as possible, here are some of the tools and services included with the program:

- Option to use more than one piece of hardware per door or drawer.
- Non-Standard drilling locations.
- Multiple drilling specifications with a custom hardware map for your project
- Access to premium showroom displays, plus vendor sites ([Hardware Resources](#), [Amerock](#), [Berenson](#)) to help you find the exact style for your home.
- Assistance in matching hardware with your inspiration images.
- Hardware larger and longer than our standard drilling specification (over 6")
- For custom selections involving four or more selections, a detailed picture packet is provided for your records and precise installation guidance.

In Association with



To better serve you!

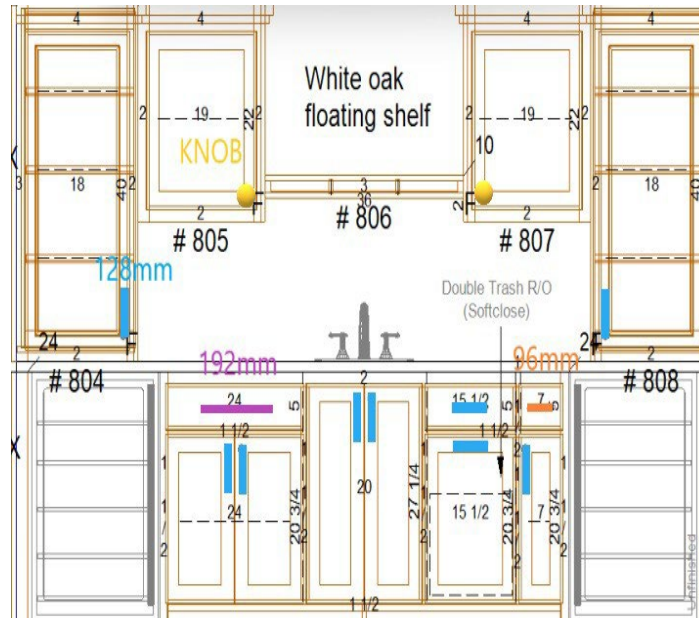
Visit us at www.lakesidecabinets.com to learn more!



LAKE SIDE

CABINETS & WOODWORKING

8209 199th Ave NW | Nowthen MN 55330 | 763-753-2628 | Fax 763-213-0724 | www.lakesidecabinets.com | lakesidecabinets@tbinc.net



FAQs

Q: How many selections am I limited to?

A: As many as you want. The cost of the hardware and services are the only things that change

Q: What if I decide to go a different route after my selections are made?

A: We understand, the only cost would be for the services already completed

Q: What is a hardware map?

A: It is a detailed drawing indicating hardware sizes and locations. This is part of custom program only.

Q: What if I can't find something I like or want to get from somewhere else?

A: No problem. We will remove the hardware allowance, and you can pick anything you want. You will need your contractor to drill and install.

In Association with



To better serve you!

Visit us at www.lakesidecabinets.com to learn more!



LAKE SIDE

CABINETS & WOODWORKING

8209 199th Ave NW | Nowthen MN 55330 | 763-753-2628 | Fax 763-213-0724 | www.lakesidecabinets.com | lakesidecabinets@tbinc.net

Hardware Selection Form

Please write the Part # and Finish in each box.
Your Cabinet Hardware Selections:

Name: _____ Builder: _____

Address: _____ City / Zip: _____

Phone: _____ Email: _____

	ROOM	DOORS	DRAWERS
1.			
2.			
3.			

Notes: _____

Standard Hardware sizes: 3" c/c | 96mm c/c (3.75" drilling holes) | 128mm c/c (5.03" drilling holes) | Knobs

examples shown here:

example 1

ROOM	DOORS	DRAWERS
Kitchen	Knob - 105MB	Pull - 625-128MB
All Bathrooms	Knob - 105SN	Pull - 65-128SN
Bar	same as kitchen	same as kitchen

example 2

ROOM	DOORS	DRAWERS
Whole House	727-128MB	727-128MB
-	-	-

In Association with



To better serve you!

Visit us at www.lakesidecabinets.com to learn more!